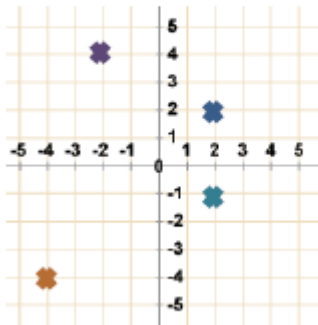


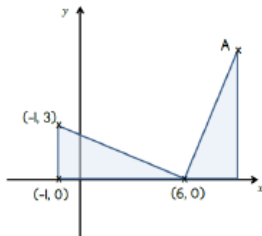
## Year 6 Home Learning: week 1 - 23.3.20

Alongside the homework, please read at home, be it a newspaper, magazine, book or internet article. If you would like an extra task, check the Take Home Tasks on the curriculum newsletter or practise the new spelling words. Also check out the Home Learning section on the website.

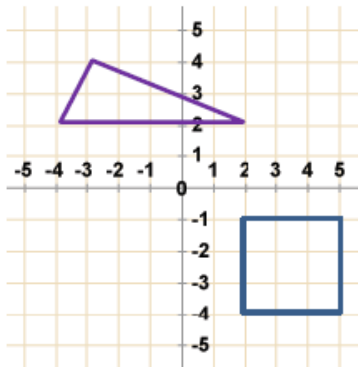
- Describe the position of the crosses marked on the grid.



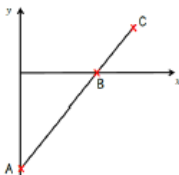
- The diagram shows two identical triangles. The co-ordinates of three points are shown. Find the co-ordinates of point A.



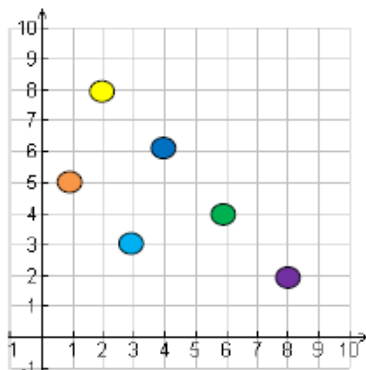
- Write down the co-ordinates of the vertices of the shapes below.



- A is the point (0, -10)  
B is the point (8, 0)  
The distance from A to B is two thirds of the distance from A to C.  
Find the coordinates of C.



- Beth draws a map of her town.



- Key:
- |            |            |
|------------|------------|
| ● My house | ● School   |
| ● Shop     | ● Cinema   |
| ● Park     | ● Ice rink |

What is at these co-ordinates?

- a) (3,3) b) (6,4)

Write down the co-ordinates of these places.

- a) School b) My house

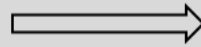
Tom and Keira look at Beth's map.

Tom says 'The cinema is at (8,2)

Keira says 'No, the park is at (8,2)

Who is wrong? Why does their mistake matter?

# arithmetic



1.  $\frac{1}{4}$  of 12 = \_\_\_\_\_

1.  $\frac{1}{4}$  of 120 \_\_\_\_\_

1.  $\frac{3}{4}$  of 120 \_\_\_\_\_

2.  $10 - 5 =$  \_\_\_\_\_

2.  $10 - 5.4 =$  \_\_\_\_\_

2.  $100 - 5.4 =$  \_\_\_\_\_

3.  $\frac{2}{5} + \frac{4}{5} =$  \_\_\_\_\_

3.  $\frac{2}{5} + \frac{3}{10} =$  \_\_\_\_\_

3.  $\frac{2}{3} + \frac{3}{10} =$  \_\_\_\_\_

4.  $2 \times 40 =$  \_\_\_\_\_

4.  $2.5 \times 40 =$  \_\_\_\_\_

4.  $2, \frac{1}{2} \times 400 =$  \_\_\_\_\_

5. 1% of 400 = \_\_\_\_\_

5. 3% of 400 = \_\_\_\_\_

5. 97% of 400 = \_\_\_\_\_

6. 5km = \_\_\_\_\_ m

6. 5m = \_\_\_\_\_ KM

6. 505m = \_\_\_\_\_ KM

## Double Letters

apprehensive  
common  
different  
difficult  
excellent  
follow  
million  
opposite  
passenger  
pollution  
press  
professional  
referee  
slippery  
still  
successful  
sunny

Use a variety of these strategies when learning your spellings:

- Word in a word.
- Memory trick.
- Say it your way.
- Write it in a sentence in context.
- Silly sentences.
- Word pictures.

Synonym/Antonym



Don't forget to check out the learning links. Have a go on Sumdog and challenge your friends (and maybe your teacher) on Times Table Rockstars...

## ● Writing task

Design a setting for a story genre of your choice.



You can think about any settings that you have encountered in stories before. Then write a description of your setting including expanded noun phrases and prepositional phrases.