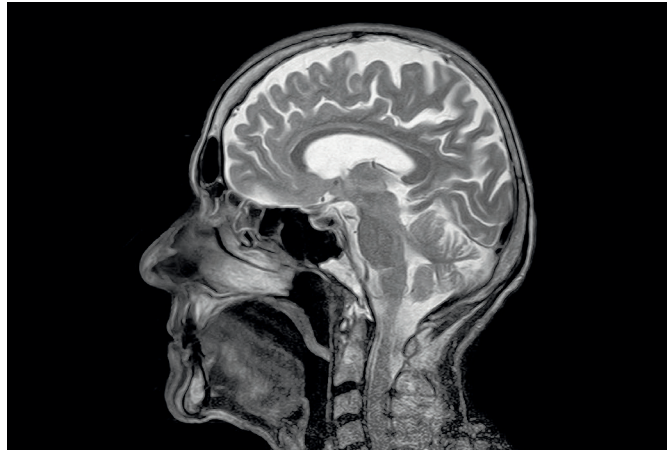


Think



- What is this?
- What can you see in the image?
- What does the brain do?
- Can you live without a brain?



Respond



Imagine you found you could use a part of your brain that gave you superpowers. What would your superpower be? What would happen to you? How would it change your life? Would you use your new-found powers for good?

Reimagine



Make a 3D model of the human brain using plasticine or clay. What is the best method to get all the coils into your model?

Discuss



Around 520 000 people in the UK have a form of dementia called Alzheimer's disease. This is caused by damage to the brain by disease which affects things such as memory, problem-solving and language skills. Do you know someone with Alzheimer's disease? How can you help raise awareness of something that could affect any one of us at some time?

Solve



During 2013-2014, a patient with a acquired brain injury (ABI) was admitted to hospital in the UK every 1.5 minutes. How many people would that be in 1 hour?

Challenge: How many people would be admitted to hospital with an ABI over the course of a day? Remember A&E is open 24 hours.

Discover



Fact: Your brain is amazing, it works faster than the fastest computer on Earth. It comprises of many different areas including the Frontal Lobe, Parietal Lobe, Temporal Lobe, Occipital Lobe, Brain Stem and Cerebellum.

Question: What do each of these areas help us do on a daily basis?

Brain **Answers**

How many people would that be in 1 hour?	How many people would be admitted to hospital with an ABI a day?
$60 \div 1.5 = 40$ people	$40 \times 24 = 960$ people a day