



Whitstable Junior School

Learning today for life tomorrow

Week ending 8 May 2026



A message from Ms Kent & Ms Collin

Dear Parents and Carers,



This term, we're focusing on one of our core values: Trust. We're exploring what it means to be trustworthy, to act with integrity, and to support one another in our school community.

This connects beautifully with the British value of mutual respect and tolerance, which teaches us to value and appreciate the differences in others while treating everyone fairly.

Our nurture value of "We listen and support each other" is at the heart of building trust. When children feel heard and supported, they learn to trust the adults and friends around them. We're teaching our pupils that:

- Everyone's voice matters
- Listening carefully shows respect
- Supporting each other makes our school community stronger
- We can trust each other to be kind and helpful



How You Can Help at Home

Here are some conversation starters to explore trust with your child:

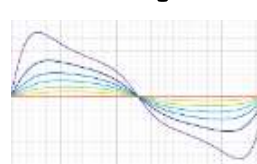
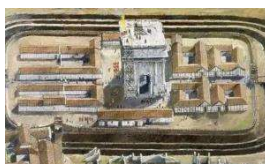
- "Tell me about a time this week when you showed you could be trusted. What did you do?"
- "Who is someone you trust at school? What makes them trustworthy?"
- "How did you listen to and support a friend this week?"

Thank you for partnering with us to help our children develop these important values.
Warm regards - Sarah Kent and Kirsten Collin



What have the children been up to this week?

Year 3 have been writing formal letters in English this week. The children have been using formal language and a range of fronted adverbials. In maths, the children have continued to work on time; looking at days, weeks and months. In science, they have been exploring skeletons including the human skeleton. In maths, **Year 4** have been working hard on converting between pounds and pence, developing their understanding of money and place value. Our English lessons have seen the class begin writing their own newspaper reports about the dramatic eruption of Mount Vesuvius. The children have been utilising the features of newspaper writing whilst exploring this fascinating historical event. The week culminated in an exciting history trip to Richborough Roman Fort, where we explored the ancient site and thought carefully about its significance to the Roman invasion of Britain. It was wonderful to see the children bringing their classroom learning to life as they walked in the footsteps of history! This week **Year 5** children have shown excellent resilience and determination whilst completing their CATS tests in the ICT suite. In science, they have been creating line graphs based on the differences in day length between the northern and southern hemisphere. Geography has also been graph-based, as they have been comparing differing climates across the 23 countries of North America. All this practice bodes well for their next maths unit on statistics which will be starting next week! **Year 6** have shown outstanding dedication this week as they prepared for their SATs. We have been incredibly impressed by their focus, resilience and positive attitudes towards their learning. Whatever happens next week, we already know they have given it their all, and we could not be prouder of each and every one of them. Alongside this, the children have completed their balanced arguments on whether Henry VIII was a good king. Their work has truly shone, with thoughtful reasoning, persuasive ideas and some fantastic turns of phrase. It has been a pleasure to see their confidence and writing skills flourish!

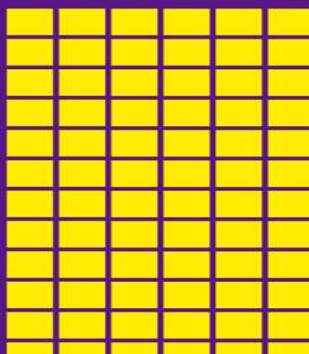


Times Table Fact of the Week

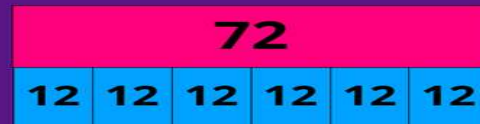
$$6 \times 12 = 72$$



$$72 \div 6 = ?$$



$$12 \times 6 = 72$$



$$72 \div 12 = ?$$

Attendance

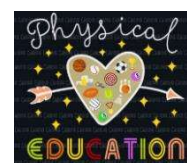


Gates open at 8.30am and close at 8.45 am. Children are registered in their ready to learn time, therefore prompt attendance is essential. If your children are late, please bring them into the office. The school logs a reason for lateness which should come from parents/carers. If children are absent due to illness, please **call the school office by 8.50am or inform the person dropping your child to let you know if they will no longer be attending that day.** If we aren't made aware, we cannot confirm your child's whereabouts, which can cause parents to worry when the office ring to report their absence. You will need to call the school each day of absence with the illness please as the school needs more info than "poorly".

PE Timetable for Term 4 & Upcoming Fixtures

Children **come to school** wearing **full PE kit** (inc. jogging bottoms and jumpers if necessary – not skins) on the following days unless swimming, in which case school uniform should be worn. Astro boots should not be worn for PE and not as part of their regular school uniform either.

- 3H** Monday Swimming/Tuesday PE/**3M** Monday Swimming/Wednesday PE
- 4J** Tuesdays Swimming/Thursday PE
- 5H** PE Wednesdays & Thursdays/**5PW** PE Tuesdays & Fridays
- 6L** PE Mondays & Fridays/**6T** PE Wednesdays & Fridays



Outdoor Learning – Term 5

Please ensure your child has a change of shoes. This is to try and limit mud being spread around the school.

- 3N** Tuesday 5 May/Tuesday 19 May
- 5PW** Wednesday 20 May
- 4J** Monday 11 May/Thursday 21 May
- 6L** Monday 18 May/**3H** Tuesday 12 May/
- 5H** Wednesday 13 May



Lunch Menu w/c 11 May – School lunches are £3.20 per day

Eggs will never be served in sandwiches – will remain as ham, cheese or tuna

MONDAY	TUESDAY	WEDNESDAY	THURSDAY	FRIDAY
Cheese and Tomato Pizza with Potato Wedges 🍕	Beef Burger with Potato Wedges 🍔	Roast Chicken with Mashed Potatoes and Gravy 🍗	Chicken and Vegetable Korma with Wholegrain Rice 🍛	Fish Fingers with Chips 🐟
OR	OR	OR	OR	OR
Tex Mex Vegetable Fajita with Wholegrain Rice 🌮	Beany Vegetable Burger with Potato Wedges 🍔	Roast BBQ Quorn with Roast Potatoes and Gravy 🍗	Macaroni Cheese 🍝	Quorn Dippers with Chips 🍷
OR	OR	OR	OR	OR
Jacket Potato Beans or Cheese 🍟	Jacket Potato Beans or Cheese 🍟	Jacket Potato Beans or Cheese 🍟	Jacket Potato Beans or Cheese 🍟	Jacket Potato Beans or Cheese 🍟
HOT DISHES ARE SERVED WITH TWO VEGETABLES AND FRESHLY BAKED BREAD				
Egg/Cheese Sandwich or Wrap 🥪	Ham/Cheese/Tuna Sandwich or Wrap 🥪	Ham/Cheese/Tuna Sandwich or Wrap 🥪	Ham/Cheese/Tuna Sandwich or Wrap 🥪	Ham/Cheese/Tuna Sandwich or Wrap 🥪
DELI DISHES ARE SERVED WITH MIXED SALAD				
Apple and Golden Syrup Sponge with Custard 🍰	Lemon Cookie 🍪	Strawberry Jelly 🍮	Banana Cake 🍰	Strawberry Ice Cream 🍦

Playground Update



Exciting progress in the playground this week. The stunning fox mural — painted and kindly donated by **Nova's dad, Joe** — has brought a burst of colour and character to the space. A huge thank you for this brilliant addition.

We've also added artificial grass to the Cozy Corner, creating a soft, inviting space where the children can curl up with a book or two.

You can follow our progress or make a donation here:

 <https://www.crowdfunder.co.uk/p/whitstable-juniors-playground-project>

Additional messaging

School pick up : parents/carers please ensure you have informed the school office if there is a change in pick up arrangements for your child, otherwise we will need to contact you regardless if your child knows the person picking up or not.

Year 6 Residential – If your child needs medication and you have not returned the medical form, please do so asap.



Summer Fair : Bottle donations please on 4 June – non-school uniform day in return and chocolate donations please on 12 June – non school uniform day in return.



Wild about Whitstable
SEE IT! CELEBRATE IT! SAVE IT!
ECO FAIR 11:00 TO 16:00 | SAT 30 MAY 2024
St John's Methodist Church, Argyle Road, Whitstable, CT5 1J5

11:00 - 11:45	Workshop: Nature poetry
All day	Exhibitors: Learn about local conservation
11:25 - 11:40	Talk: Permaculture
All day	Retailers: Eco products and sustainable solutions
11:45 - 13:15	Activity: Nature treasure hunt with biologist & environmental expert
All day	Bring & buy: To reuse, recycle and mend
13:15 - 13:30	Talk: Future food forests
All day	Activity: Bird nest building & bird expert on hand
14:00 - 14:45	Workshop: Drawing nature
All day	Activity: Bee bomb making & bee expert on hand
14:00 - 16:00	Activity: Children's nature story telling
All day	Activity: Great prizes to be won!
14:45 - 15:00	Talk: Keeping our sea healthy & plastic free!
All day	Activity: Collaborative nature appreciation through art and poetry

Letters and email

If you have a message, please send it to the office and it will be passed to your child's teacher / dealt with as appropriate. Do contact the office if you require paper copies. Please refer to the date section of the newsletter for upcoming trips.



Dates (dates in red indicate a date change)

w/c 11 May – Year 6 SATs tests
 Friday 15 May – Year 5 Wonder Dome
 Friday 15 May – Year 6 End of Sats trip to Betteshanger
 Thursday 21 May – Class/group photos
 Friday 22 May – End of Term 5
 Monday 1 June – Start of Term 6
 Monday 1 June – Kent Test application for year 5 opens
 Wednesday 3 June – Friday 5 June – Year 6 residential
 Thursday 4 June – Bottle donations for fair/non-school uniform
 w/c Monday 8 June – Years 5 & 6 Swimming lessons x 5
 Wednesday 10 June – Dynamo Cricket (Boys) US 10 – 3.30pm Chestfield CC
 Friday 12 June – Chocolate donations for school fair/non school uniform
 Friday 12 June – Summer Fair – 3.15 – 4.30pm
Monday 15 June – Year 4 Otterden trip
 Wednesday 17 June – Football Tournament LS - Herne Bay High 1.30pm – 3.30pm
 Tuesday 23 June – Sports Day
 w/c Monday 29 June – Transition Week – ALL schools on Thursday 2 July
 Wednesday 1 July – Dance Competition TBC (Boughton Village Hall)
 Wednesday 1 July Kent Test application closes
 Thursday 2 July – New Year 3 Parent Meeting at 9am
 w/c Monday 6 July – Year 6 Production
 Tuesday 7 July – New September Year 3 Parents Evening Meet at 5.30pm
 Friday 10 July – After school clubs finish
 Wednesday 15 July – Full Reports to parents
 Wednesday 15 July – Year 6 Leavers Celebration in St Alphege church from 11am for Year 6 and 2pm for parents
 Thursday 16 July – Leaver’s Disco
 Friday 17 July – End of Term 6
 Monday 20 July – SDD
 Tuesday 21 July - SDD
TERM DATES 2026/2027
Term 1 Starts Wednesday 2 September 2026/**Term 1 Ends** Friday 23 October 2026
Term 2 Starts Monday 2 November 2026/**Term 2 Ends** Friday 18 December 2026
Term 3 Starts Monday 4 January 2027/**Term 3 Ends** Friday 12 February 2027
Term 4 Starts Monday 22 February 2027/**Term 4 Ends** Thursday 25 March 2027
Term 5 Starts Monday 12 April 2027/**Term 5 Ends** Friday 28 May 2027
Term 6 Starts Monday 7 June 2027/**Term 6 Ends** Friday 16 July 2027
SDD Days:
 Tuesday 1 September 2026/Friday 30 April 2027/Monday 19/Tuesday 20/Wednesday 21 July 2027



This document was created with the Win2PDF "Print to PDF" printer available at

<https://www.win2pdf.com>

This version of Win2PDF 11 is for evaluation and non-commercial use only.

Visit <https://www.win2pdf.com/trial/> for a 30 day trial license.

This page will not be added after purchasing Win2PDF.

Win2PDF Overview: <https://www.win2pdf.com/video/overview/>

Purchase Win2PDF: <https://www.win2pdf.com/purchase/>